

## In-Line & 90° Offset Arms

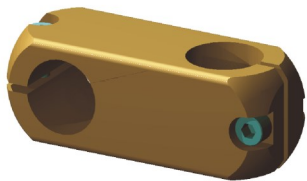
### Features & Benefits

The In-line Offset Arm and the 90° Offset Arm provide a cost effective solution for simple 90° transitions or in-line offsets without the expense or added flexibility of our patented Swivel Clamp Assemblies.

- Solid one piece machined aluminum for structural integrity.
- Machined to close tolerance for maximum clamping force on standard bases, tooling arms and tooling links.
- Ideal for a simple 90 degree offset or an in-line offset of standard bases to tooling arms or tooling arm to tooling arm transitions.
- Independent adjustability in two axis.
- Metric fasteners.
- Anodized finish for appearance and durability.

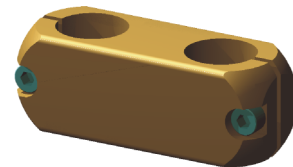
### FLEX 100 Offset Arms

Part Number	Component
S.100.AA.171	Offset Arm 90°
S.100.AA.172	Offset Arm In-line



### FLEX 125 Offset Arms

Part Number	Component
S.125.AA.171	Offset Arm 90°
S.125.AA.172	Offset Arm In-line



If you are purchasing any of our In-Line & 90° Offset Arms, you might also want to look at:

- *Standard Bases*
- *Tooling Links*

These additional components can be found online in our Tooling section at [www.atlastechnologies.com](http://www.atlastechnologies.com).