

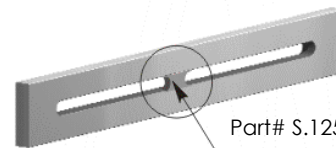
## Crossbars

### Features & Benefits

- Solid one piece machined aluminum for structural integrity.
- Slots to mount multiple shovels on a single finger tool.
- Slots to accept the machined key on the wedge clamp assembly for mounting to Series 100 and Series 125 tooling arms while maintaining radial orientation.
- Numerous standard lengths to accommodate a double shovel arrangement for various width parts.

### Crossbars

Part Number	.xx =	Length (mm)	Length (inches)
S.125.AA.132.01	0.01	152.4	6
S.125.AA.132.03	0.03	203.2	8
S.125.AA.132.05	0.05	254	10
S.125.AA.132.07	0.07	304.8	12



Part# S.125.AA.132.XX

Bridge machined in crossbars:  
.03, .05, & .07. No bridge in .01.

If you are purchasing our Crossbars, you might also want to look at:

- *Tooling Arms*
- *Shovels*

Additional components can be found online in our Tooling section at [www.atlastechnologies.com](http://www.atlastechnologies.com).